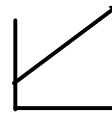


6.1 Features of a Quadratic Relationship pp 238 -244

Linear relationship has a graph that is a straight line and equation with an exponent of 1.

Example Equation - $y = 2x + 4$



Quadratic relationship has a graph that is a curved line called a parabola and an equation with an exponent of 2.

Example Equation - $y = 2x^2 + 4$



Parabola - a U- shaped symmetrical graph.

Jan 9-3:16 PM

Textbook page 239 - Example 1 - Table of values

Graphing Assignment - page 241 # 1, 2
page 242 # 4, 5
page 243 # 7
page 249 # 1

Jan 9-3:37 PM